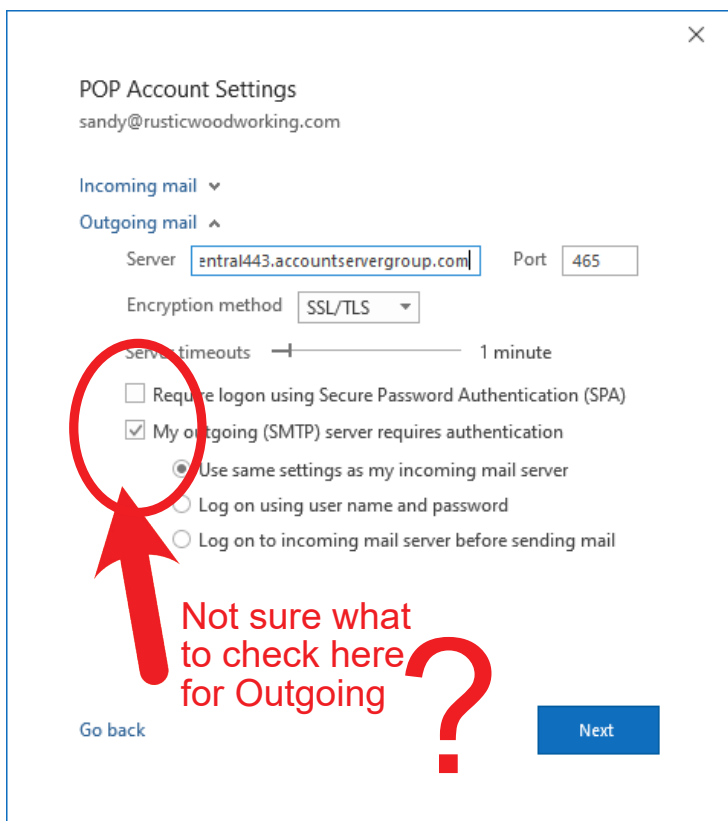


Not sure what to check here For Incoming?

I click on my account in Outlook, and then click on "repair".

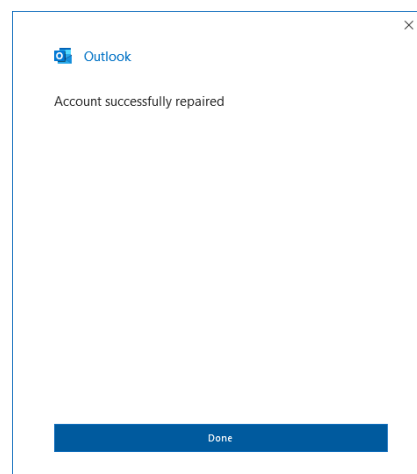
Every time I do this, Outlook has switched the server names back to pop.rusticwoodworking for Incoming, and smtp.rusticwoodworking for outgoing. I have tried entering the uscentral443.accountservergroup.com many many times on all of my email accounts, and the next time I go in to check, it is gone.



Not sure what to check here for Outgoing?

I add the uscentral443.accountservergroup.com in both the incoming and outgoing server boxes, and enter in the port numbers as instructed.

Then it says that the account was successfully repaired, but....it is not, as it reverts back to pop and smtp again.



POP Account Settings  
sandy@rusticwoodworking.com

Incoming mail ^

User name: sandy@rusticwoodworking.com  
Password: \*\*\*\*\*  
 Remember password

Server: pop.rusticwoodworking.com Port: 995

This server requires an encrypted connection (SSL/TLS)  
 Require logon using Secure Password Authentication (SPA)

Outgoing mail v

Go back Next

When I go back in to check it, Outlook always switches the incoming and outgoing servers names to "pop.rusticwoodworking.com" and "smtp.rusticwoodworking.com". It does not change the port settings.

I have also tried typing in "mail.rusticwoodworking.com", but Outlook changes that to "Pop" and "Smtp" again.

POP Account Settings  
sandy@rusticwoodworking.com

Incoming mail v  
Outgoing mail ^

Server: smtp.rusticwoodworking.com Port: 465

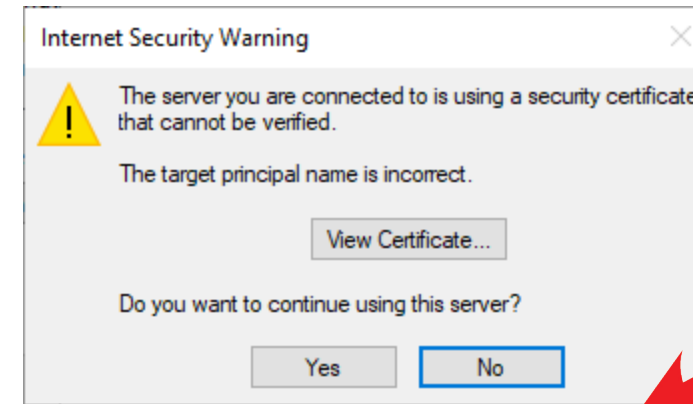
Encryption method: SSL/TLS

Server timeouts: 1 minute

Require logon using Secure Password Authentication (SPA)  
 My outgoing (SMTP) server requires authentication

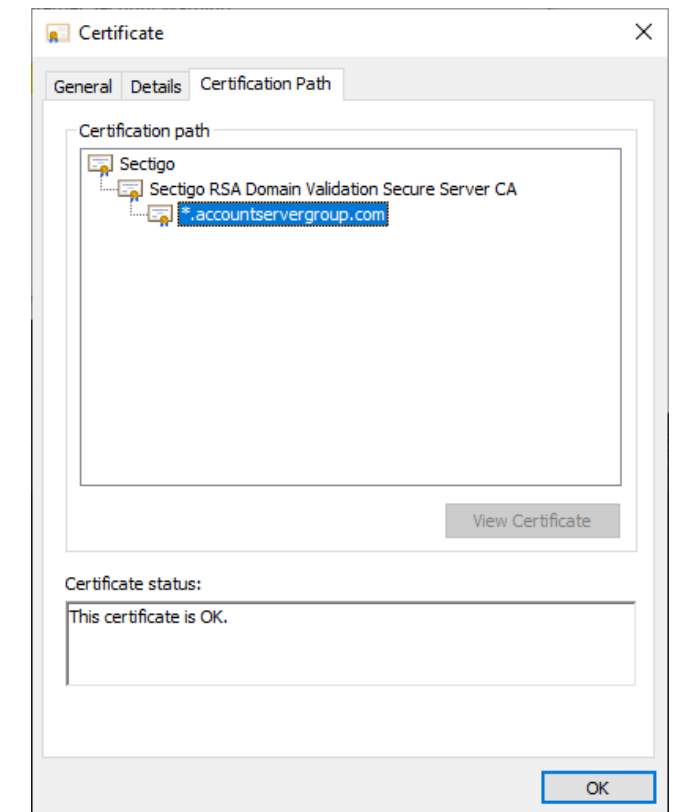
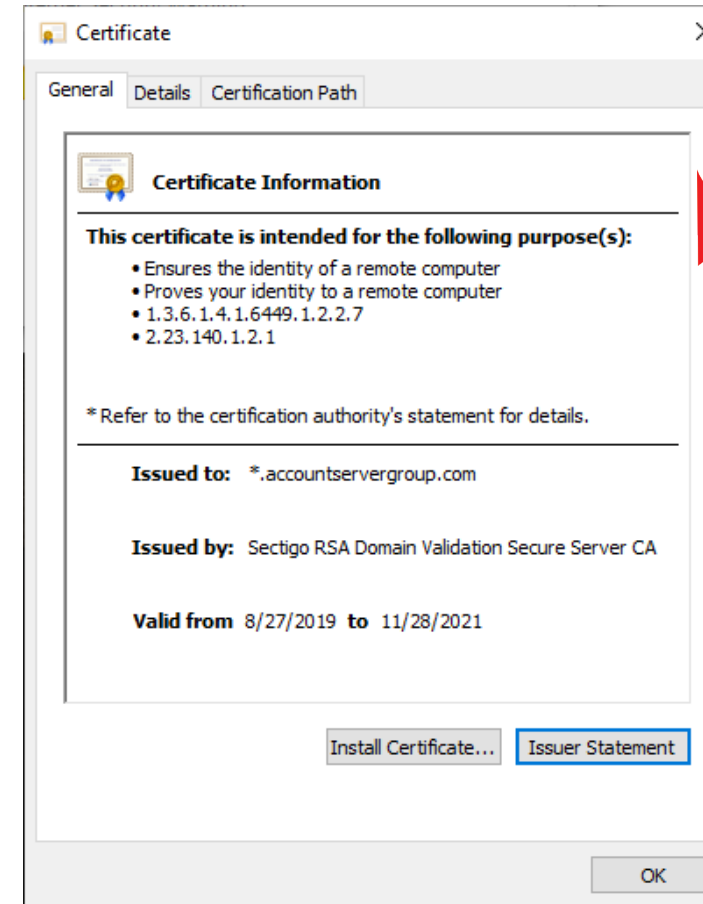
- Use same settings as my incoming mail server
- Log on using user name and password
- Log on to incoming mail server before sending mail

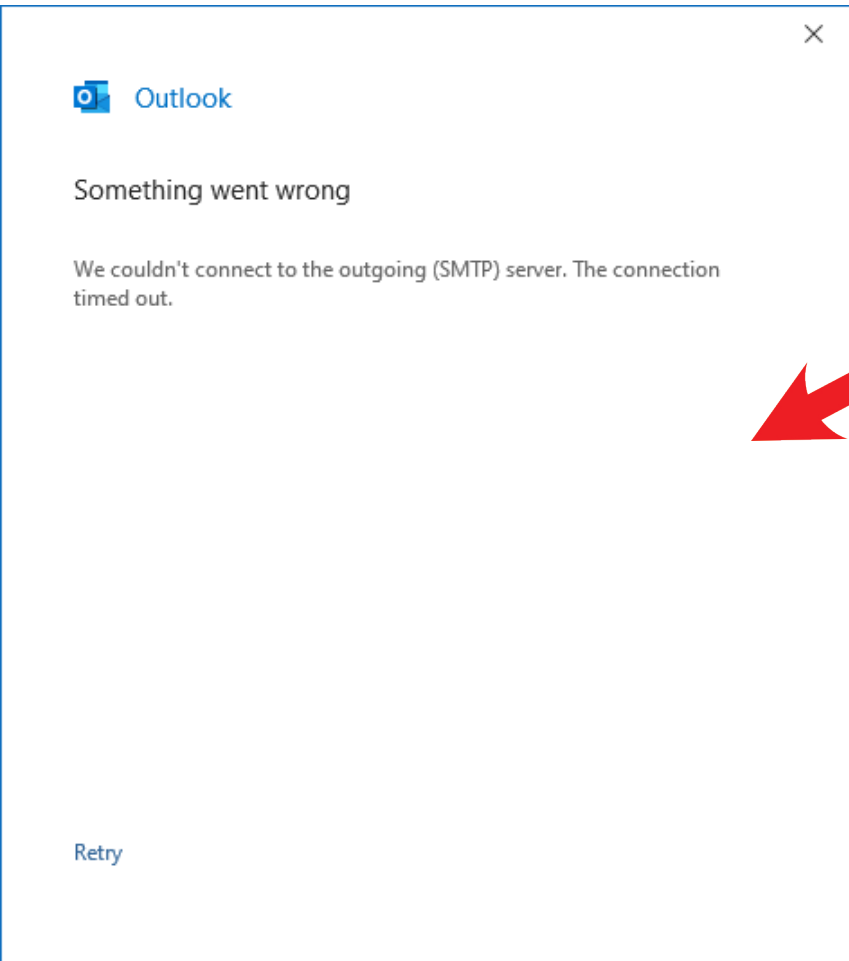
Go back Next



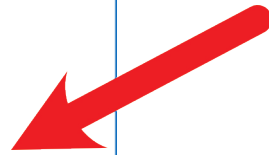
I see that the certificate is valid, and so does Outlook.

Why are they warning that the security certificate cannot be verified.

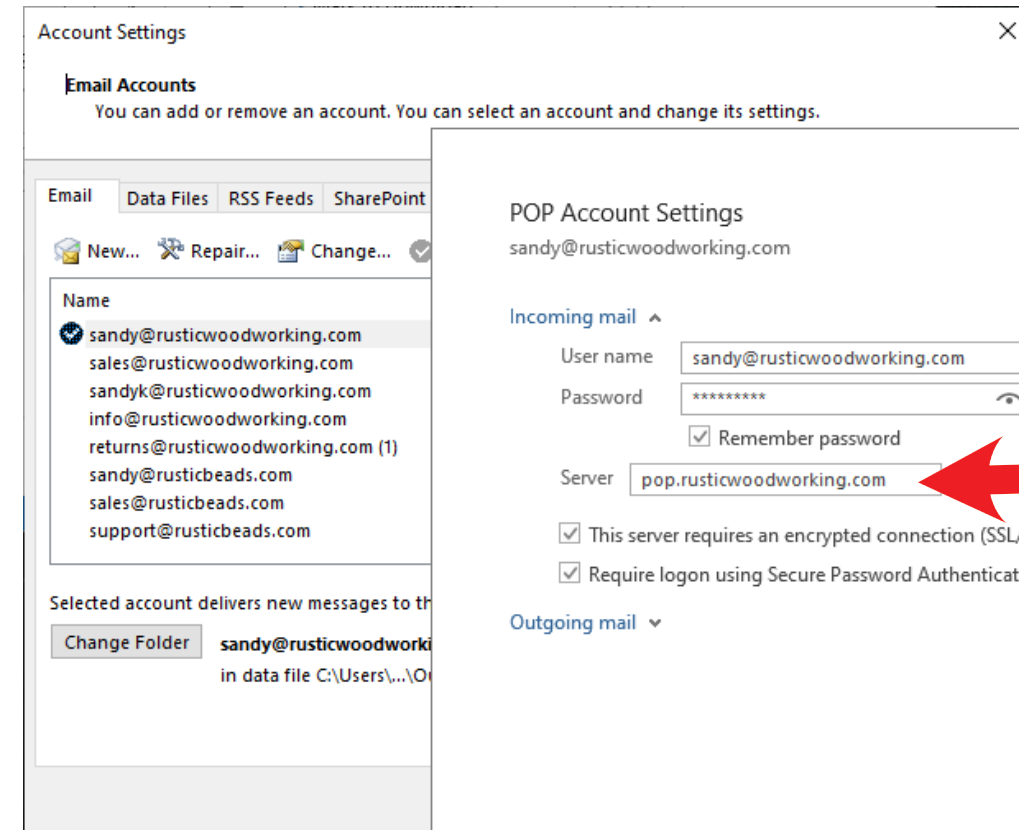




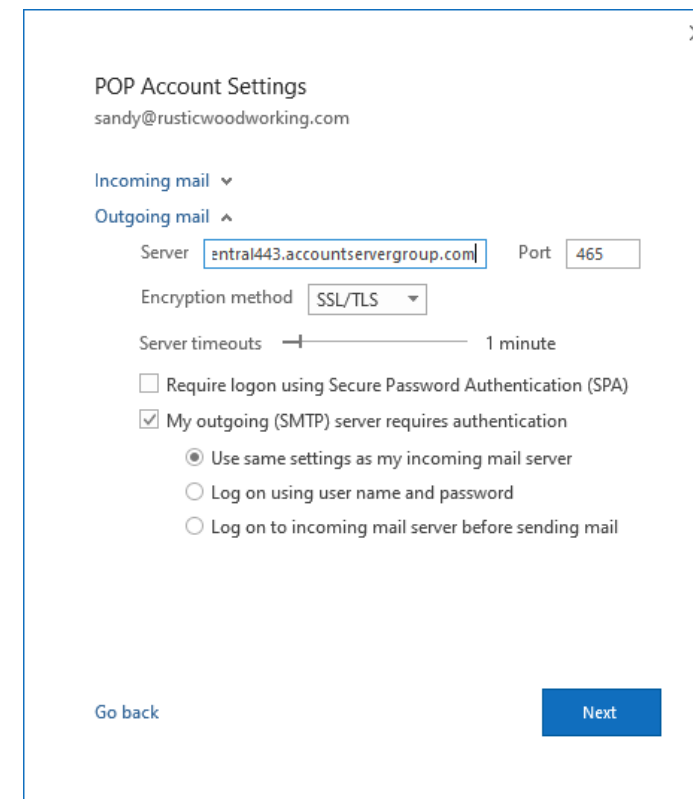
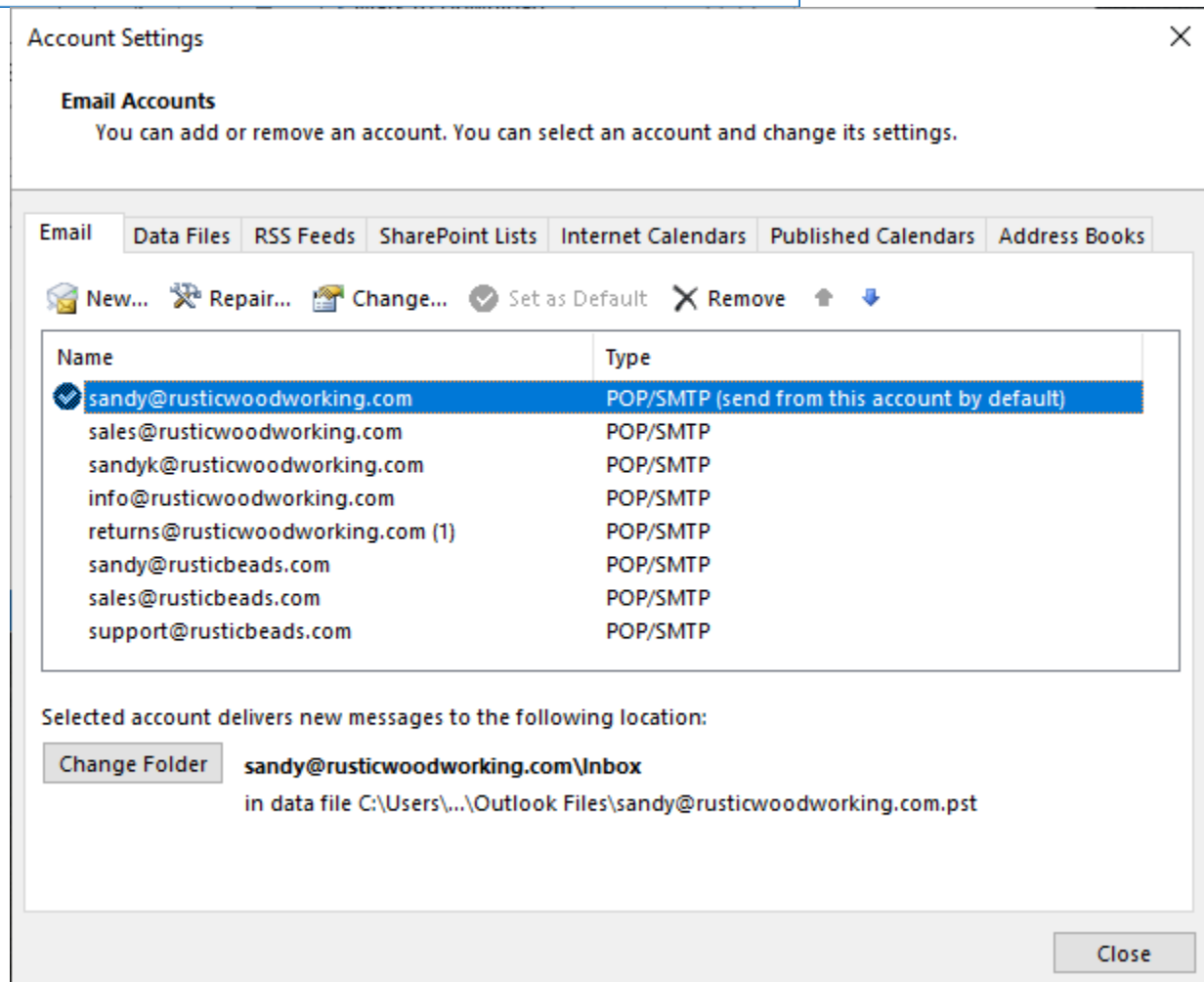
Sometimes I receive this after trying to set an email up no matter what I type in.



Trying again.....



When I open the POP account settings, Outlook once again has changed it to pop and smtp automatically, even when I choose to "manually repair" the account!



Here we go again, but I am still receiving the certificate warnings, and unless I click "yes", I cannot download mail. It will do this all day long, so I have to manually check for emails throughout the day otherwise they are not being received automatically.

